



Stacking bin with lid - 600 x 400 x H 135 mm - red



Product specifications

External dimensions (L x W x H) 600 x 400 x 135 mm

Internal dimensions (L x W x H) 566 x 366 x 116 mm

Max. stacking load (kg) 200 kg

Capacity 23.2 liter

Handles Closed

Sidewalls Closed

Material PP

Article number 30.612.DB.4

Weight (kg) 1,9 kg

Temperature range -20°C to +80°C

Color Red

Bottom Closed, smooth

European Article Number 7424900586595

Colorcode RAL 3020

Load capacity (kg) 20

Quantity per pallet 80

Properties

Featuring a smooth bottom.

The standard version comes with closed handles.

Lid containers can also be stacked with lids.

Lid containers feature a detachable hinged lid.

The lid container comes with two snap-lock closures in the lid.

Description

Lid container in Euro norm format 600 x 400 mm. This version is composed of a fully closed stacking container with a hinged lid and two snap-lock closures. The lid container is stackable with Euro norm cases, stacking containers, and other Euro norm lid containers. Due to the standardized dimensions, the lid container can also be perfectly combined with standardized pallets, roll containers, and mobile bases. Goods can be transported safely and dust-free in lid containers. We supply foam interiors, seals, and label holders as accessories for the lid containers.



Matching accessories



30.ZBS.00001



52.TR6040.4.E



52.TR6040.4.H



52.TR6040.4.K



2800.520.312

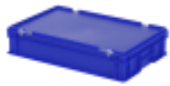


2800.510.312

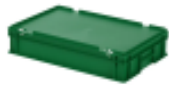
Alternative articles



30.612.DB.2



30.612.DB.3



30.612.DB.8



30.612.DB.10