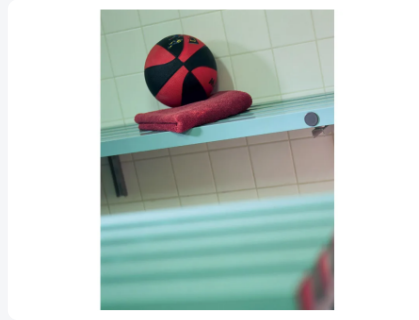


Article number: KRGBE



Single wardrobe setup



Product specifications

External dimensions (L x W x H) 2000 x 570 x 1800 mm

Material PVC

Article number KRGBE

Temperature range -40°C to +80°C

Color Green

Properties

Free space below: 400 mm

The seat part forms a single unit and consists of six longitudinal tubes with 25 mm spacing for comfortable seating, the top shelf is 300 mm deep for storage of bags etc.

Description

Plastic cloakroom bench / changing room bench (2000 x 570 x H 1800 mm) - single arrangement, equipped with construction with 8 double hooks, suitable for wet areas. Ideal for efficient and corrosion-free furnishing of changing rooms. Other sizes and configurations available on request. The load capacity of the cloakroom bench is 200 kg per linear meter.

