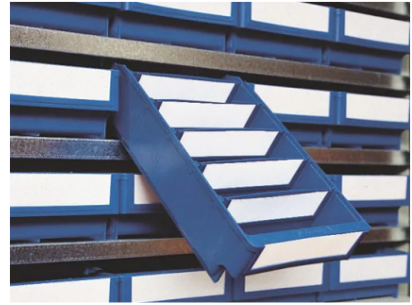
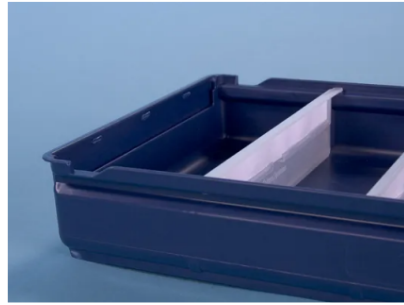


Article number: 9103.760.623



# Storage bin - shelving bin 9103 - 300 x 230 x H 100 mm - system bin - blue (PU = 16)



## Product specifications

External dimensions ( L x W x H)	300 x 230 x 100 mm
Internal dimensions (L x W x H)	250 x 224 x 88 mm
Capacity	4.9 liter
Sidewalls	Closed
Material	PP
Article number	9103.760.623
Weight (kg)	0,39 kg
Temperature range	-20°C to +50°C, briefly up to +90°C
Color	Blue
Bottom	Closed
Quantity per pallet	320

## Properties

**Shelving bin / plastic Storage bin type 9103.  
Dimensions: 300 x 230 x 100 mm (l x w x h) - 4.9 liter**

**System bin from the H100 product line - with a bin height of 100 mm**

**For use on shelves with a clearance of 110-130 mm - so that the H100 product line fits neatly**

**For use on shelves with a depth of 300 mm**

**The width of this Shelving bin is 230 mm**

**Shelving bins are operated from the top**

**When needed, the bins are pulled forward to remove materials**

**The rear is fitted with a recess as a safety stop**

**Internal dimensions: 250 x 224 x 88 mm (l x w x h)**

**Optionally available with up to 2 cross dividers - for compartment division**

**With closed base and walls - without hand hole**

**With label area at the front**

**Made from impact-resistant polypropylene plastic (PP)**

**Food-grade - for direct food contact**

**The PP plastic used is flexible and low-noise**

**Largely resistant to chemicals and common cleaning agents**

**Our Shelving bins are system bins - designed to organise shelving systems, cabinets or paternoster cabinets systematically**

**Options: label incl. protective film - cross divider (transparent)**

## Description

The Shelving bin 300 x 230 x H 100 mm is designed for users with high demands on their storage system. The bin is intended for use on shelves with a clearance of approx. 110-130 mm, so that the 100 mm Shelving bin fits neatly. The length of the Shelving bin (300 mm) is matched to the most common shelf size. For small items, the Storage bin can easily be divided with cross dividers. The Shelving bin offers sufficient space for the tidy storage of items such as screws, nuts, bolts, wall plugs or electronic components. The parts bin is operated from the top. During use, it is pulled forward out of a rack or shelf. To prevent it from falling out, a recess has been made at the rear of all Shelving bins as a safety stop.

The bin is made of impact-resistant polypropylene (PP), for intensive use and a long service life. The PP plastic used is flexible and therefore low-noise, helping to create a pleasant working environment. Because the plastic is food-grade, the food sector, pharmaceuticals and the chemical industry also make frequent use of this Shelving bin.



## Matching accessories



## Alternative articles

