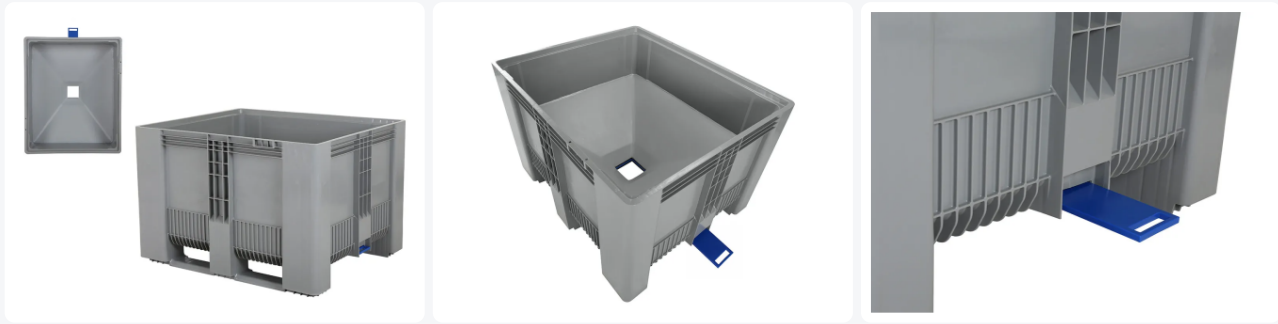




Funnel base pallet box SB3 - 1200 x 1000 mm - 500 liter - with 120 mm slide gate - on 2 runners and 1 leg - rim-stackable - grey



Product specifications

External dimensions (L x W x H)	1200 x 1000 x 790 mm
Internal dimensions (L x W x H)	1110 x 910 x 590 mm
Capacity	500 liter
Sidewalls	Closed, with smooth inner walls.
Material	HDPE
Article number	81941811.BD120
Weight (kg)	55 kg
Temperature range	-30°C to +40°C
Color	Grey
Bottom	Closed and reinforced, with a central bottom outlet.
Max. load capacity per box	700 kg
Max. static stacking load	5000 kg
Max. dynamic stacking load	1200 kg
Quantity per pallet	3

Properties

Plastic pallet box with funnel base on runners - fully plastic.

Type: Based on pallet box SB3 1200 x 1000 x H 790 mm - 2 runners and 1 foot - grey.

Load capacity: 700 kg.

Capacity: 500 liter.

Material: PE plastic (polyethylene) - corrosion-free and durable.

Base: Tapered funnel base.

Angle: The sloping base with a 35° incline supports easy emptying without tilting.

Opening: Central opening 120 x 120 mm (optional 140 x 140 mm and 240 x 240 mm).

Slide gate: Manually operated from the short side for controlled release of the contents.

Application: Ideal for dry bulk goods such as granules, seeds, grain, dry animal feed, pellets and other small components.

Design: Smooth, funnel-shaped interior to promote easy product flow.

Stacking: Stable stacking via the Euro stacking system, i.e. rim-stackable and therefore compatible with most other pallet box types.

Stability: Very robust one-piece pallet box, i.e. including the runners.

Impact protection: Heavy rib structure all around above the entry openings to prevent impact damage.

Food safety: Suitable for direct contact with food.

Cleaning: Easy to clean thanks to the smooth design; the plastic is resistant to most cleaning agents and chemicals.

Limitations: Not suitable for liquids and moist products. Less suitable for powders (test in advance).

Options: Lid - RFID code - QR code or barcode - box in other colours: blue, yellow, green, red and black - central outlet opening 140 x 140 mm or 240 x 240 mm.

Description

The SB3 pallet box with funnel base measures 1200 x 1000 x H 790 mm and has a capacity of 500 liter. This large-format plastic pallet box features a 120 x 120 mm outlet at the bottom, centrally positioned in the base. This opening can be closed manually with a slide gate operated from the short side of the box.

The inside of the SB3 box is smooth and funnel-shaped at the bottom with a 35° slope, allowing the contents to flow out easily when the slide gate is opened. This makes tilting or dumping the box unnecessary. Ideal for dosing dry bulk goods such as seeds, grain and dry animal feed, but also granulates, wood pellets and small components. The pallet box and the entire inner construction are made of food-grade plastic, so direct contact with food is not a problem.



Matching accessories



Alternative articles

