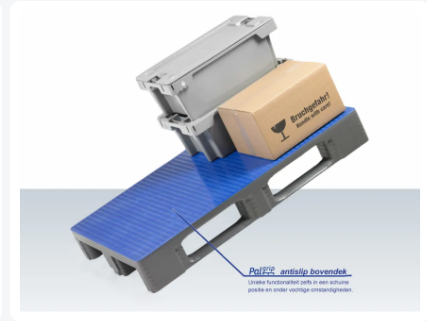
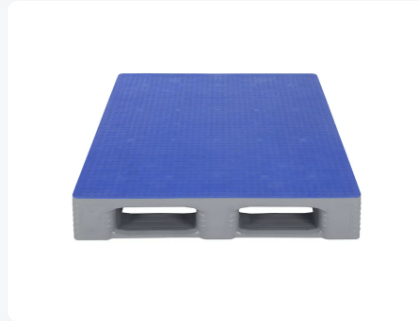
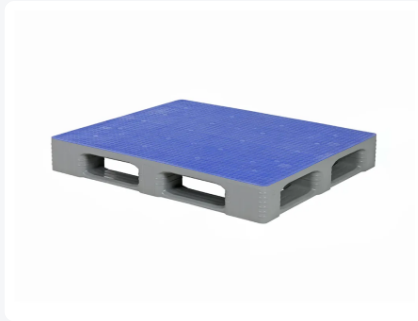


Article number: 87039899

Printing possible



Industrial pallet TC3-5 - 1200 x 1000 mm - anti-slip top deck - 5 runners - grey



Product specifications

External dimensions (L x W x H)	1200 x 1000 x 160 mm
Dynamic load capacity	1500 kg
Material	HDPE
Article number	87039899
Weight (kg)	23,5 kg
Temperature range	-30°C to +40°C / briefly up to +90°C
Color	Grey
Static load capacity	7500 kg
Load capacity in racks	1250
Quantity per pallet	15

Properties

Top and underside of the pallet deck are completely smooth and closed; the top side is integrally finished with Palgrip anti-slip

Maximum cleanability and hygiene

Manual cleaning is possible without any issues

Suitable for direct food contact

High impact resistance thanks to the patented welding of the top deck

High racking load capacity up to 1250 kg

By integrating 3 fully integrated longitudinal reinforcement profiles in the pallet deck, racking capacity can be increased up to 2000 kg

Robust connection between pallet blocks and skids

Pallet skids are bevelled on both sides for smooth handling

Profiled block corners for improved grip of stretch and wrap film

Marking, logos and numbering on request; position to be agreed

Options: Pallet lid / pallet cover - fit-on rims - QR codes and barcodes - fully integrated longitudinal metal inserts - RFID transponders

Description

Industrial pallet (1200 x 1000 mm) in the Totally Closed (TC) version with 5 pallet skids for maximum stability, also during block stacking. Extremely easy to clean and offering optimal hygiene properties — ideal for use in the food industry, pharmaceuticals and the chemical industry.

The top side of the pallet deck is fully finished with Palgrip anti-slip. This prevents loads from shifting or slipping, even on inclines and in humid environments. In addition, empty pallets are centred excellently on top of each other without raised rims. Palgrip anti-slip is fully integrated into the surface, making it extremely durable. The pallet's anti-slip performance remains guaranteed over time — without repairs.



Alternative articles

