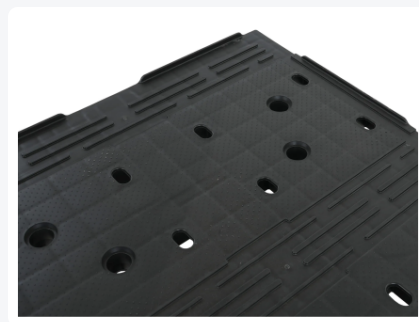


Article number: 83510221

Printing possible



# Half Euro pallet D2-L - 800 × 600 mm - ESD version - with 7 mm rims - 3 pallet runners crosswise - black



## Product specifications

External dimensions ( L x W x H)	800 × 600 × 160 mm
Dynamic load capacity	500 kg
Material	PP with carbon compound
Article number	83510221
Weight (kg)	8,5 kg
Temperature range	-18°C to +40°C / briefly up to +90°C
Color	Black
Surface resistance	?1x10 E4 Ohm to 1x10 E11 Ohm
Static load capacity	2000 kg
Edge height	7 mm
Quantity per pallet	30

## Properties

**Electrostatic dissipative (ESD):** protects sensitive parts against build-up and electrostatic discharge

**Plastic alternative to the “Düsseldorfer” wooden pallet**

**The D2-L pallet weighs only 8.5 kg, making it very easy to handle**

**Pallet runners are positioned crosswise, just like on the “Düsseldorfer”. Even so, the entry width is 567 mm - sufficient to handle the short side with hand pallet trucks**

**The deck has a relief texture to help prevent loads from slipping**

**In addition, a Lego structure is applied on the deck and underneath the pallet runners for centring pallets when stacked**

**Thick, solid pallet runners for use on roller conveyors and chain conveyors**

**Studs on the corner blocks for improved grip of stretch and wrap film**

**Marking, logos or numbering on request. Location by arrangement**

**Options: ESD pallet lid / pallet cover - QR codes and barcodes - without rims - with 24 mm outer rim - anti-slip rubber strips (continuous - for both top and underside of the deck)**

## Description

The D2 is a half Euro pallet and serves as the plastic alternative to “Düsseldorfer” wooden pallets. The design of the D2 pallet is identical to this “Düsseldorfer” pallet. The 3 pallet runners are located on the short side, i.e. crosswise. Even so, the entry width on the short side is large enough (567 mm), so using hand pallet trucks is also trouble-free. The pallet runners are thick and solid, making them particularly stable - an important factor when used on roller conveyors and chain conveyors.

The D2 deck features a relief texture to help prevent loads from slipping. Empty D2 pallets are also accurately centred by the raised rims and by the Lego structure on both the deck and the underside of the pallet runners. This ensures D2 pallets stack neatly on top of each other.

Our ESD pallets are produced from a high-quality plastic to which an ESD compound is added. This gives the pallet electrically conductive properties. It prevents electrostatic build-up and subsequent discharge, which can damage sensitive electronics.

The D2-L pallet with 7 mm rims is designed for the safe transport of Euro standard stackable bins (ESD version). For additional centring of a complete pallet load with stackable bins, we supply an 800 × 600 mm pallet lid in ESD version.

