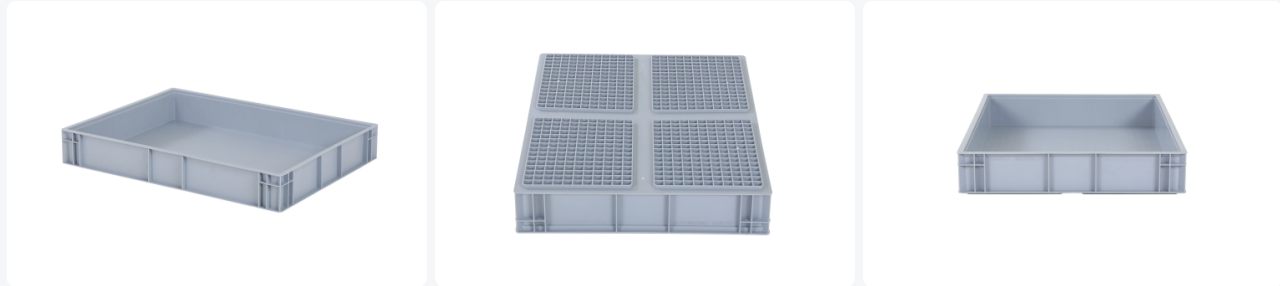


Article number: 8.806012.D.1

Printing possible



# Stacking bin 800x600xH120mm closed grey



## Product specifications

External dimensions ( L x W x H)	800 × 600 × 120 mm
Internal dimensions (L x W x H)	750 × 550 × 107 mm
Max. stacking load (kg)	250 kg
Capacity	45 liter
Handles	Closed
Sidewalls	Closed
Material	PP
Article number	8.806012.D.1
Weight (kg)	3,32 kg
Temperature range	-10°C till +60°C
Color	Grey
Bottom	Closed, reinforced
Load capacity (kg)	40
Quantity per pallet	38

## Properties

Plastic stacking container in Euro norm size: 800 x 600 x H 120 mm, with a capacity of 45 liters.

Fully enclosed design for optimal protection of stored goods.

Reinforced bottom ensures extra strength and durability.

Suitable for stacking and combining with standardized pallets.

Ideal for storage of goods requiring protection against dust, moisture, and environmental influences.



## Matching accessories



## Alternative articles

