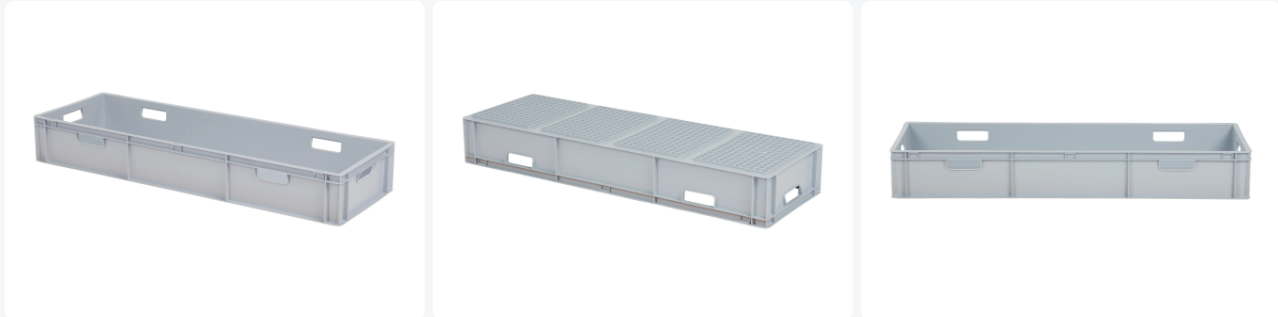




# Stacking bin 1200x400xH171mm closed 6 OH grey



## Product specifications

External dimensions ( L x W x H)	1200 x 400 x 171 mm
Internal dimensions (L x W x H)	1154 x 355 x 156 mm
Max. stacking load (kg)	250 kg
Capacity	64 liter
Handles	Open
Sidewalls	Closed
Material	PP
Article number	8.124017.O.1
Weight (kg)	3,46 kg
Temperature range	-10°C to+60°C
Color	Grey
Bottom	Closed, reinforced
Load capacity (kg)	40
Quantity per pallet	26

## Properties

Dimensions: 1200 x 400 x H 171 mm

Capacity: 64 liters

Food-safe

Fully closed plastic Euro norm stackable container

Reinforced bottom for added strength

Six handles for easy handling

Suitable for various applications, such as storage and transport of food products and other goods.

## Description

Fully enclosed stacking container in Euro-standard dimensions of 1200 x 400 mm. The container has a capacity of 64 litres and a height of 171 mm, including the reinforced base. This large-capacity stacking container can be perfectly combined with standard pallets measuring 1200 mm in length, allowing for efficient palletization and optimal utilization of storage and transport space.



## Matching accessories



## Alternative articles

