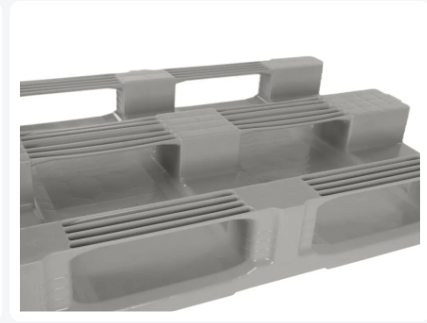
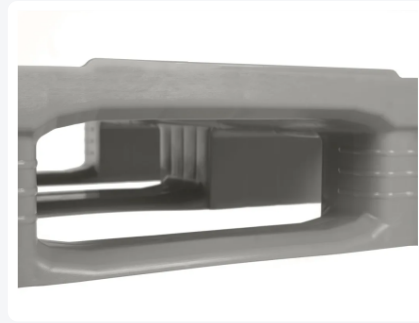


Article number: 87065201

Printing possible



Euro pallet TC1 ECO - 1200 x 800 mm - with 7 mm rims - 3 pallet runners - black



Product specifications

External dimensions (L x W x H)	1200 x 800 x 160 mm
Dynamic load capacity	1250 kg
Material	Recycled ECO-HDPE
Article number	87065201
Weight (kg)	18 kg
Temperature range	-30°C to +40°C / briefly up to +90°C
Color	Black
Static load capacity	7500 kg
Edge height	7 mm
Load capacity in racks	1000
Quantity per pallet	15

Properties

Top and underside of the pallet deck are completely smooth and closed

Maximum cleanability and hygiene

Manual cleaning is possible without any issues

High impact resistance thanks to the patented welding of the top deck

The TC1 ECO is manufactured from high-quality ECO regranulate

The high-grade regranulate quality guarantees a homogeneous welding result and excellent pallet quality

Pallet loads and empty pallets are secured and centred by 7 mm raised rims

High racking load capacity up to 1000 kg

By integrating 3 fully integrated longitudinal reinforcement profiles in the pallet deck, racking capacity can be increased up to 1750 kg: on request

Robust connection between pallet blocks and skids

Pallet skids are bevelled on both sides for smooth handling

Profiled block corners for improved grip of stretch and wrap film

Marking, logos and numbering on request; position to be agreed

Options: Pallet lid / pallet cover - fit-on rims - QR codes and barcodes - fully integrated longitudinal metal inserts - RFID transponders - rimless top deck, 22 mm deck rims or 22 mm outer rims - fully Palgrip anti-slip top deck

Description

The TC1 pallet is our fully closed plastic pallet in Euro format 1200 x 800 mm. This 3-skid version is also part of the Totally Closed (TC) range. This product range has proven itself many times over in the food industry, pharmaceuticals and the chemical industry — wherever cleanability and hygiene are essential.

The ECO regranulate version is a high-quality recycled pallet used in high-tech environments, for example in cleanrooms and other technical production areas. Here too, easy cleaning is crucial. In addition, this ECO pallet is widely used for supplying the food sector, for example for packaging. Thanks to the high-quality regranulate material, the production of the TC1 ECO results in a very homogeneous weld and excellent product quality. As a result, the TC1 in ECO version offers outstanding impact resistance and a high load capacity — comparable even to a pallet made from virgin material.

Among pallets available on the market with a completely smooth and closed pallet deck, the TC pallet is the number one in terms of impact resistance. This is achieved through the patented welding of the top deck, featuring maximum wall thicknesses and an intelligently designed impact zone.

The pallet deck is fitted with 7 mm raised rims all around. In most cases, this is sufficient to centre both loads and empty pallets on top of each other. Practical tests are the best benchmark here. Where maximum anti-slip performance is required, our Palgrip version with an anti-slip top deck is the best solution.

Matching accessories



Alternative articles

