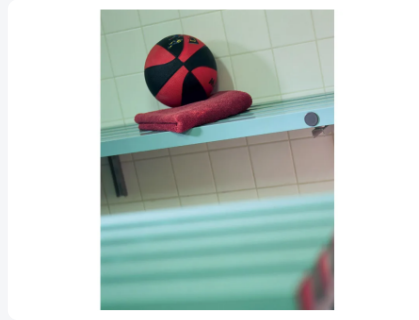


Article number: KRGBD



Double wardrobe setup



Product specifications

External dimensions (L x W x H)	2000 x 850 x 1800 mm
Material	PVC
Article number	KRGBD
Temperature range	-40°C to +80°C
Color	Green

Properties

The seat part forms a single unit and consists of nine longitudinal tubes with 25 mm spacing for comfortable seating, the top shelf is 300 mm deep for storage of bags etc.

Free space below: 400 mm

Description

Plastic cloakroom bench / changing room bench (2000 x 850 x H 1800 mm) - double arrangement, equipped with construction with 8 double hooks, suitable for wet areas. Ideal for efficient and corrosion-free furnishing of changing rooms. Other sizes and configurations available on request. The load capacity of the cloakroom bench is 200 kg per linear meter.

