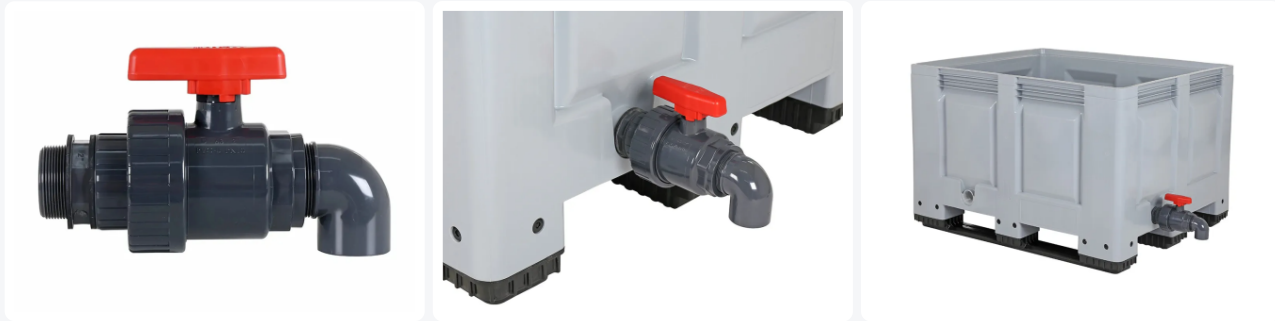


Article number: 1612252.K



Check tap 2" with angled outlet for pallet boxes - mounted on the short side - dark grey



Product specifications

External dimensions (L x W x H)	285 x 125 x 160 mm
Material	PVC
Article number	1612252.K
Weight (kg)	1,32 kg
Temperature range	-10°C to +50°C, briefly up to +90°C
Color	Grey

Properties

Plastic check tap 2" with screw-on angled outlet

Colour dark grey - suitable for outdoor applications

The check tap allows liquids to drain in a controlled manner

For mounting, the tap is fitted with a 2" feed-through with screw thread and rubber sealing rings

When ordered, this check tap is mounted in the pallet box ordered at the same time - on the short side

Description

Plastic check tap 2" with external thread and angled outlet. The adjustable check tap is supplied mounted in plastic pallet boxes, transport containers, Multi-Purpose containers, grit bins etc. - **on the short side**; we provide the outlet opening and the screw thread.

Matching accessories

